

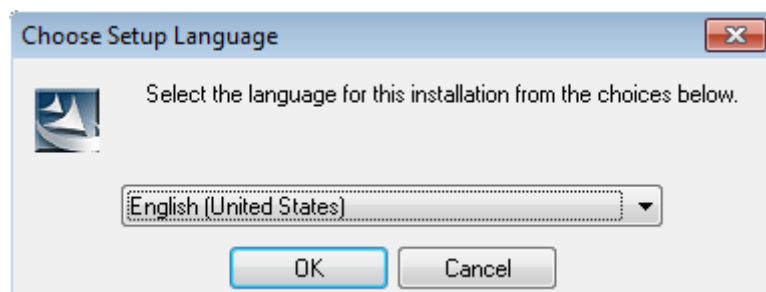
Isotech ADVANCED Portable Calibrators provide cutting end data logging, graphical recording and setpoint programs combined with world leading performance. The instrumentation has been developed by Eurotherm and is compatible with the Eurotherm tools for creating and editing set point programs and managing the logged data.

Isotech ADVANCED calibrators feature Eurotherm by Schneider Electric's 'nanoDAC' technology.

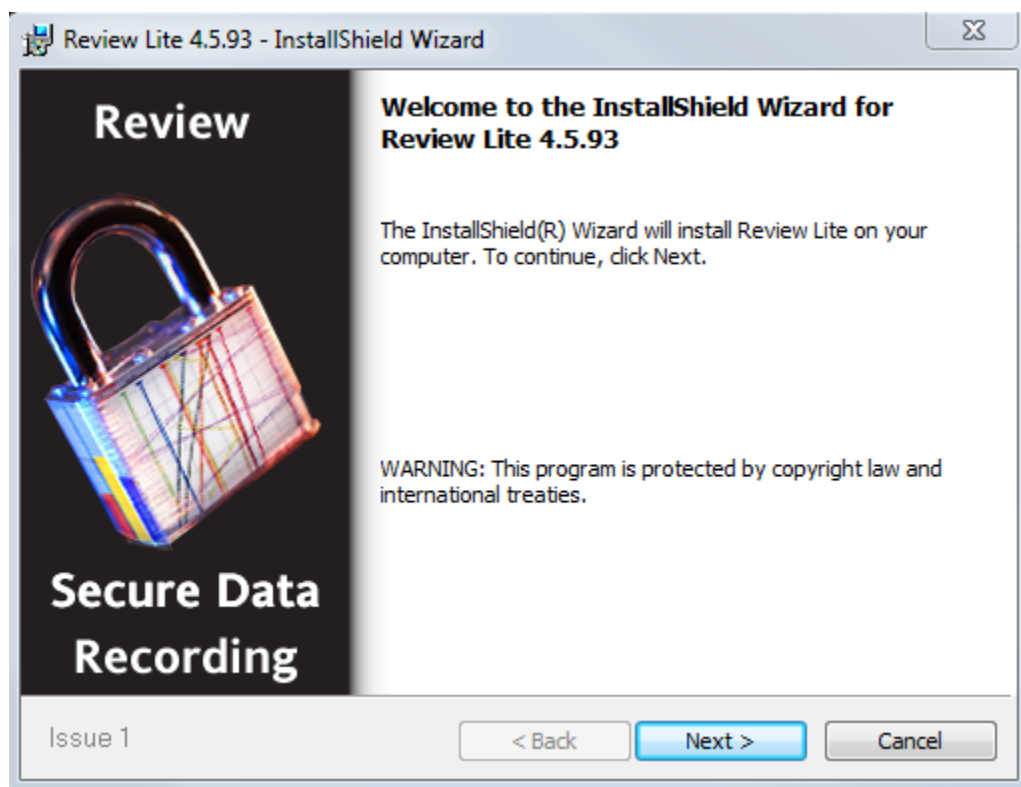
Instructions to install Review Lite for managing logged data

Install review_lite v4.5.93.exe:

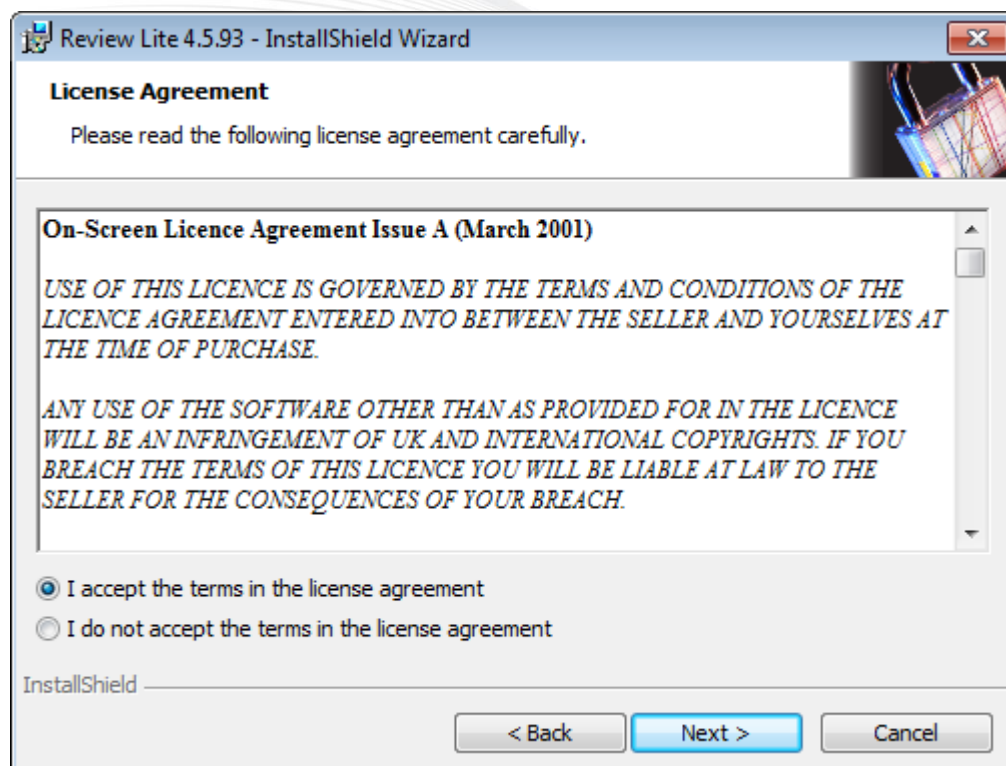
1. Install review_lite_v4-05.exe by launching it.
2. Select the appropriate language



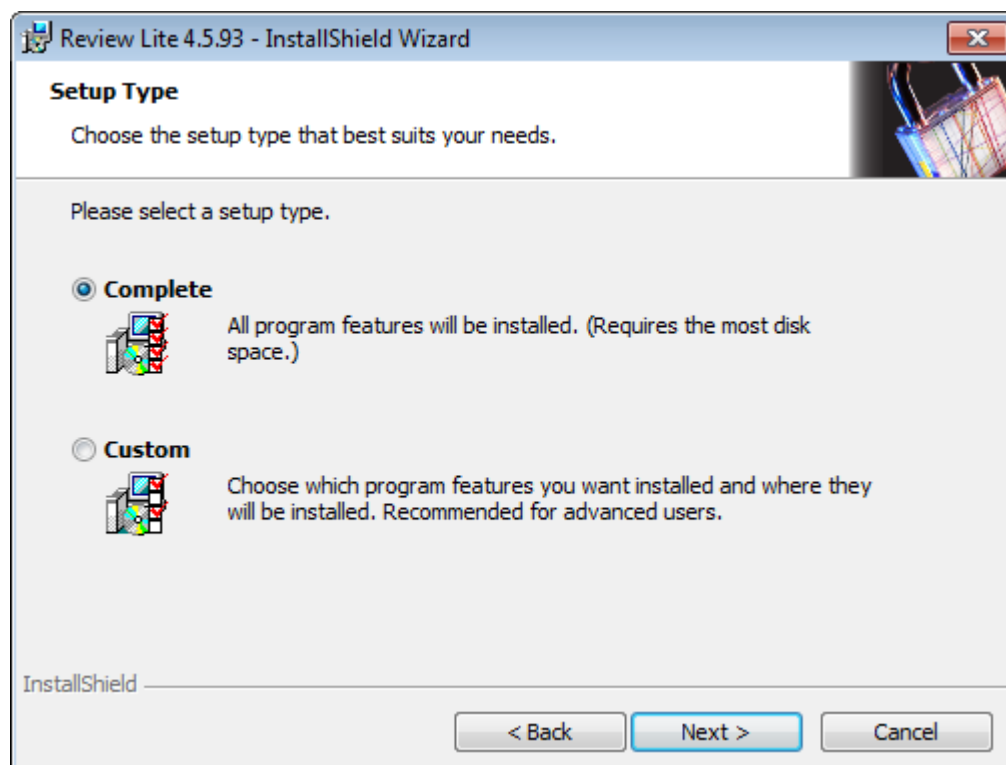
3. Click "Next" on the welcome screen:



4. Accept the license agreement

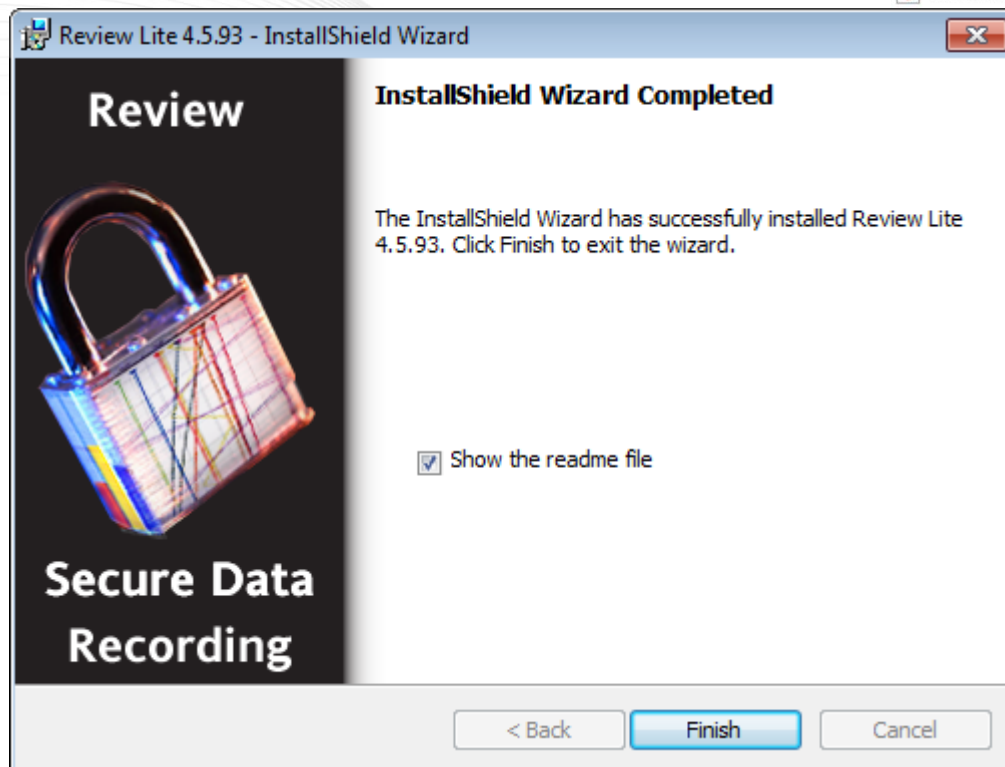


5. Select "Complete"

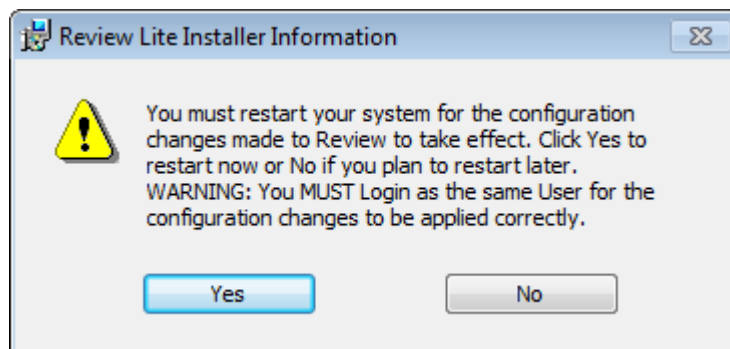


6. Press "Finish" once completed

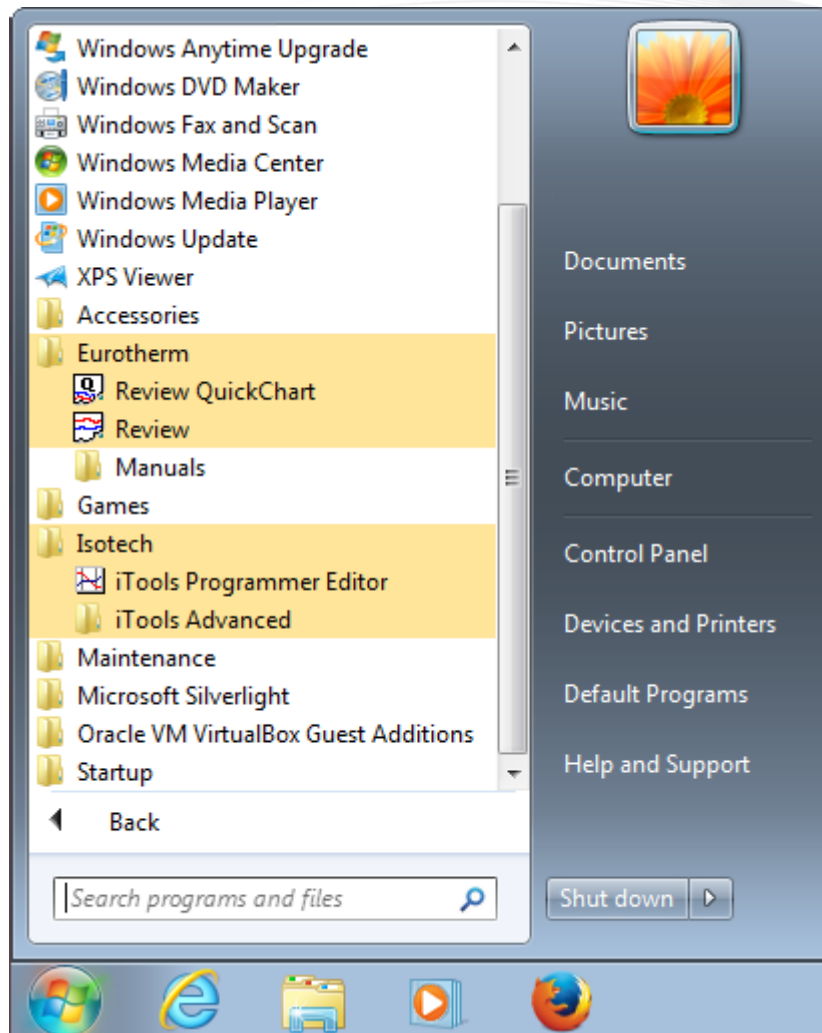
ISOTECH Software Installation Procedure v2 - DEV: 5852 |



7. Note that you may be requested to reboot your PC to complete the installation



Once you have restarted your PC, you may now launch “iTools Programmer Editor” or “Review” by going to the Windows Start button.

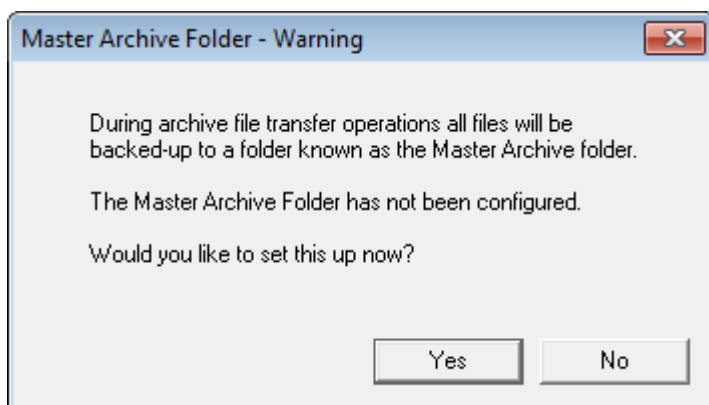


Running Review

Default Password:

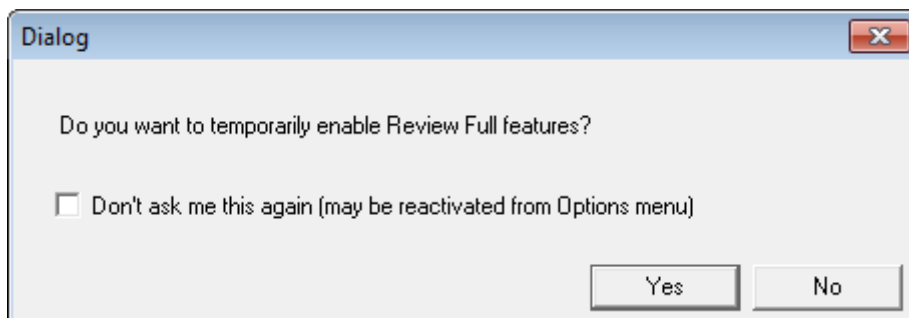
The default User name is: **history** and the default password is : **history**

On first run, you will be asked to configure the Master Archive Folder.



Please select an appropriate folder accessible by your current user.

You will then be asked whether you wish to temporarily enable Review Full features.



Selecting "Yes" will activate time limited full features. These features will be disabled after 10 minutes, requiring either a restart or a separate purchase. For details, please refer to the Review Helpfile (section 1 – Introduction).

Advisory Note: When setting up an Instrument in Review Tick the box "Use proxy Passive FTP". This will allow Review to connect and access history files after entering the correct security credential.

Instrument Setup (TCP/IP)

Identifier	Address
Instrument TCP/IP 1	192.168.111.222

TCP/IP Address or Host Name:
192.168.111.222

Identifier:
Instrument TCP/IP 1

Connect Timeout (secs):
3

☒ Transaction logging to 'C:\ProgramData\Eurotherm\Review\Comm.log'

☐ Use proxy for FTP

☒ Use Passive FTP

Add Instrument Remove Instrument OK Cancel

ISOTECH Software Installation Procedure v2 - DEV: 5852 I



Isothermal Technology Limited Pine Grove, Southport, Merseyside PR9 9AG England
 Telephone: +44 (0)1704 543830/544611 Fax: +44 (0)1704 544799 Email: info@isotech.co.uk Website: www.isotech.co.uk

Directors: J. P. Tavener C.Eng., MSc., M.I.E.E., I. F. Tavener, W. H. Reck **Company Registration No:** 1530620